



Maldives
RITRELLA

Live on the waves.
A new way to stay
in the heart of the ocean





YOUR OCEAN ADDRESS

Ritrella is more than a yacht - it is a new chapter in Maldivian travel: a life on water where the hotel becomes movement, and the ocean becomes your address.

The Ocean Stay & Floating Experience format is an alternative to classic resorts and hotels — designed for those who aren't looking for “just another Maldivian getaway,” but a completely new way to live by the ocean.

Stay for a night, embark on a mini-cruise, host a party or a wedding, or simply change your horizon - without leaving civilization, yet anchored in the heart of the ocean.

It's a way to experience the ocean rather than simply observe it. A place where each day unfolds as a new discovery, inviting you to live your holiday in full.

By day, you can explore underwater restaurants, five-star resorts, visit local and uninhabited islands, snorkel along vibrant coral reefs, or watch sunsets from the upper deck. And in the evening, you return to your cozy cabin, lulled by the sound of the Indian Ocean.

There is no excessive luxury here - only pure comfort, the aesthetics of slow travel, and a team deeply in love with the ocean.

Ritrella offers a fresh perspective on the Maldives - vibrant, inspiring, and authentic.





Ritrella

New travel experiences | Lifestyle tourism | Slow travel



Fast and affordable transfers



Stays from just 1 night



A new location every day



Daily beach visit for FREE

Location

North and South Male atolls.
Every day – a new location, a route for each day of the week

Target Audience

- Travelers tired of traditional, look-alike hotels
- Couples seeking emotional connection, adventure, and romance
- People who value atmosphere and meaning over status
- Ocean lovers - snorkelers, divers, island-hoppers
- Small groups of friends, families, and creative-minded travelers

Transfer

Scheduled transfers ensure comfort and punctuality.
Travel time is 20–30 minutes.
Transfers from nearby resorts and local islands are also available.

from Airport → to Ritrella	11:00	16:00
from Ritrella → to Airport	08:00	13:00

The scheduled transfer rate is as follows:
\$25 one way or \$50 round trip per person.
Free for children aged 0–2.

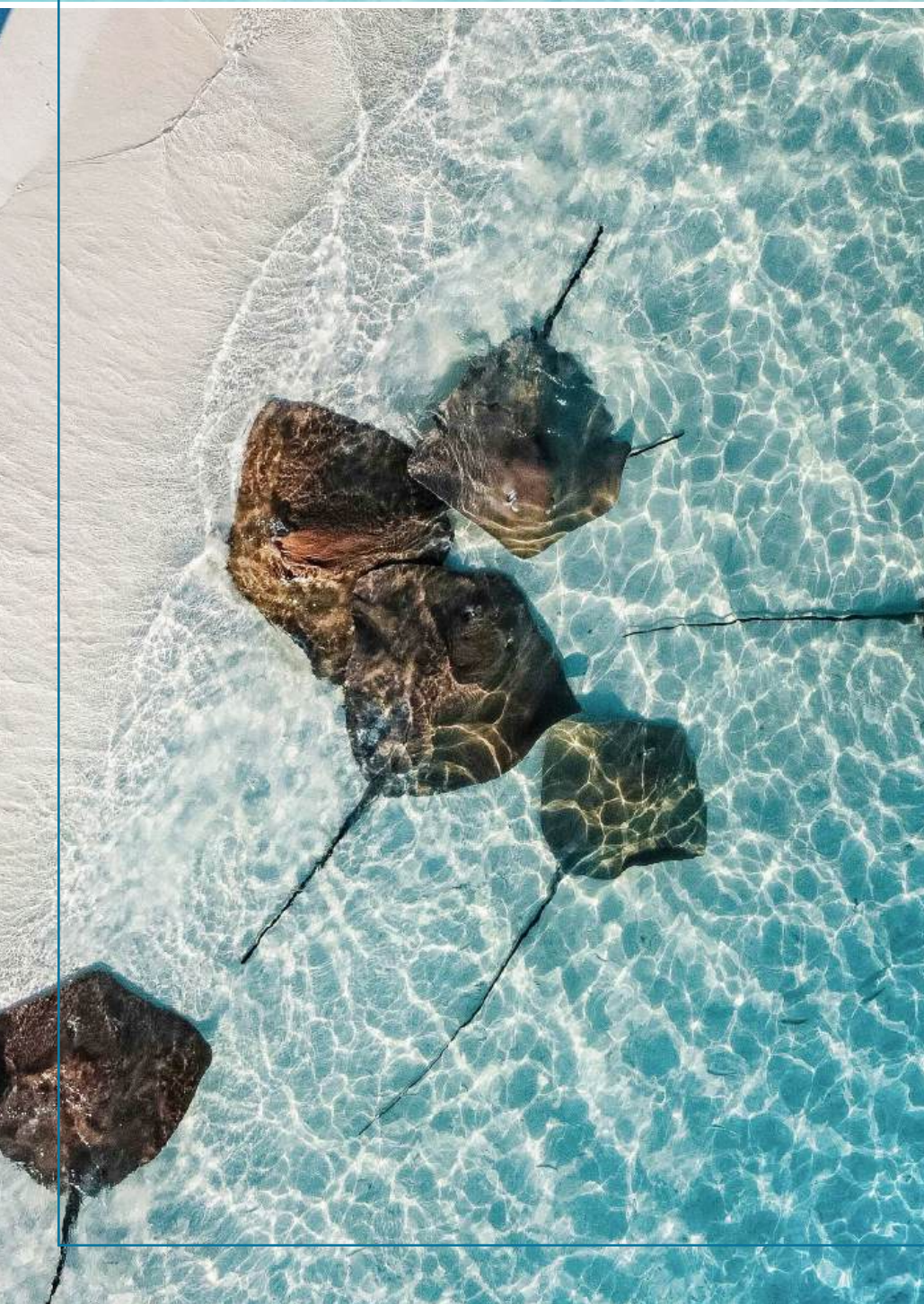
A private transfer can be arranged at any other time (from 7:00 to 23:00).
The cost is \$180 one way per boat.

Transfer schedules may change. Please inquire for updated rates and the latest schedule.



Every day brings a new way to connect with the sea, no scuba tank required.

Glide across calm lagoons on a paddleboard or join a guided island hop to explore hidden beaches. Snorkeling, sunset fishing, beach BBQs — Ritrella offers plenty of ways to enjoy the ocean, even if you never go below.



Sports & Activities



Day visits to resorts



Excursions



Visits to underwater restaurants



Fishing



Dive center — access to the best dive spots for both beginners and experienced divers. Equipment rental available.



Motorized and non-motorized water activities: SUP board, kayak, inflatable towable tube



Diving

1 dive	80\$
5+ dives	70\$
10+ dives	60\$
15+ dives	55\$
20+ dives	50\$

Snorkeling & Excursions Price per person

One beach visit per day	Free
Snorkeling on coral reefs	30\$
Aquarium excursion "Fish tank"	50\$
Nurse sharks adventure	50\$
Night snorkeling	60\$

Water sports Price per person

SUP board, 30 minutes	10\$
SUP board, 60 minutes	15\$
Kayak, 30 minutes	10\$
Kayak, 60 minutes	15\$
Towable tube, 3 person, 15 minutes	15\$
Towable tube, 3 person, 30 minutes	25\$

Onboard activities is extra chargeable
Some excursions are available on certain days of the week



Schedule

Breakfast

7:30 - 9:00

Lunch

13:00 - 14:00

Dinner

19:00 - 20:00

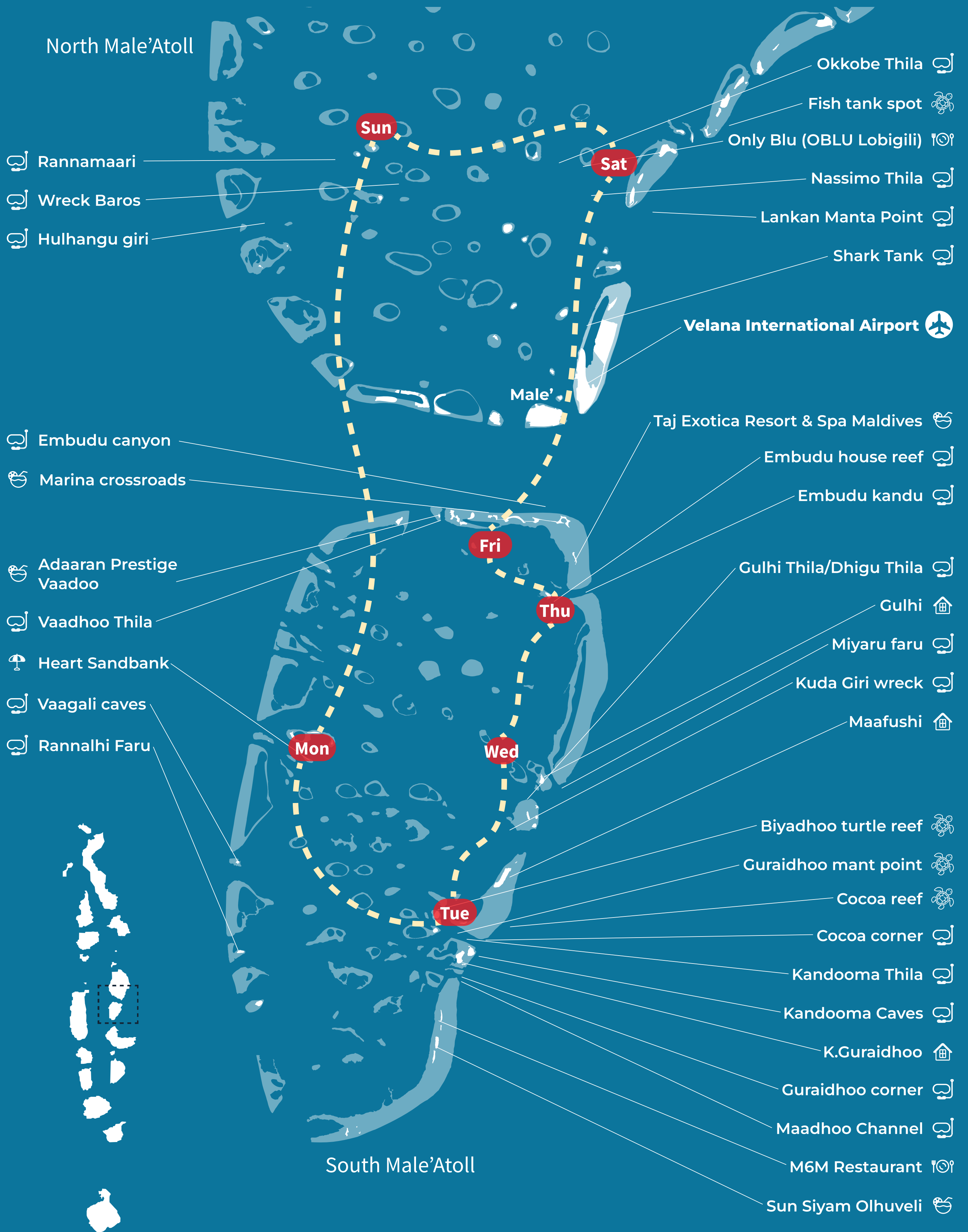
Day	Nearest resort/local island	Dive sites	Activities
Monday	Waldorf Astoria	Kalhuhura Channel Haruna Corner Dhigufaru Corner Vaagali thila	Beach access: Tholhimaraa Huraa or Heart sandbank Local island visit: Maafushi
Tuesday	K.Guraidhoo Como Cocoa	Cocoa corner Kandooma Thila Kandooma Caves Guraidhoo corner Maadhoo Channel	Local island visit: K.Guraidhoo/Maafushi Beach access: Como Cocoa Sandbank Resort visit: Sun Siyam Olhuveli Snorkeling: Biyadhoo turtle reef Cocoa Reef Guraidhoo manta point Underwater restaurant: M6m
Wednesday	K.Gulhi Anantara Dhigu	Gulhi Thila/Dhigu Thila Miyaru faru Kuda Giri wreck	Local island visit: Gulhi, Maafushi Snorkeling: Coral spots nearby K.Maafushi Cocoa Back reef
Thursday	Embudu Village	Embudu house reef Embudu kandu	Resort visit: Taj exotica Excursion: Nurse sharks adventure Beach access: Sandbank or Gulhi beach
Friday	Saii Lagoon	Adaraan Prestige Vadhoo cave	Beach club: Marina crossroads Beach access: Gulhi or sandbank
Saturday	Paradise Island Himmafushi	Shark tank Nassiomo Thila Okobe Thila Lankan Manta point	Excursion: Fish tank (Kandhou giri) Underwater restaurant: Only Blu (OBLU Lobigili) Snorkeling: Kandhou giri fish tank spot Beach access: Himmafushi or Sandbank Resort visit: Bandos 4* Adaraan Select Hudhuranfushi 4* Sheraton Maldives Full moon Resort & Spa 5*
Sunday	Banyan tree	Wreck Baros Thila Hulhangu Giri	Beach access: Sandbank

The route, divesites and schedule of the day may be changed by decision of the captain and administration based on weather conditions and taking into account safety measures for the yacht's guests.
Depending on the weather and the monsoon, free beach access may be replaced by free snorkeling.
Reservations for underwater restaurants and a resort visits must be made no earlier than 3 days before the expected visit date.



Route

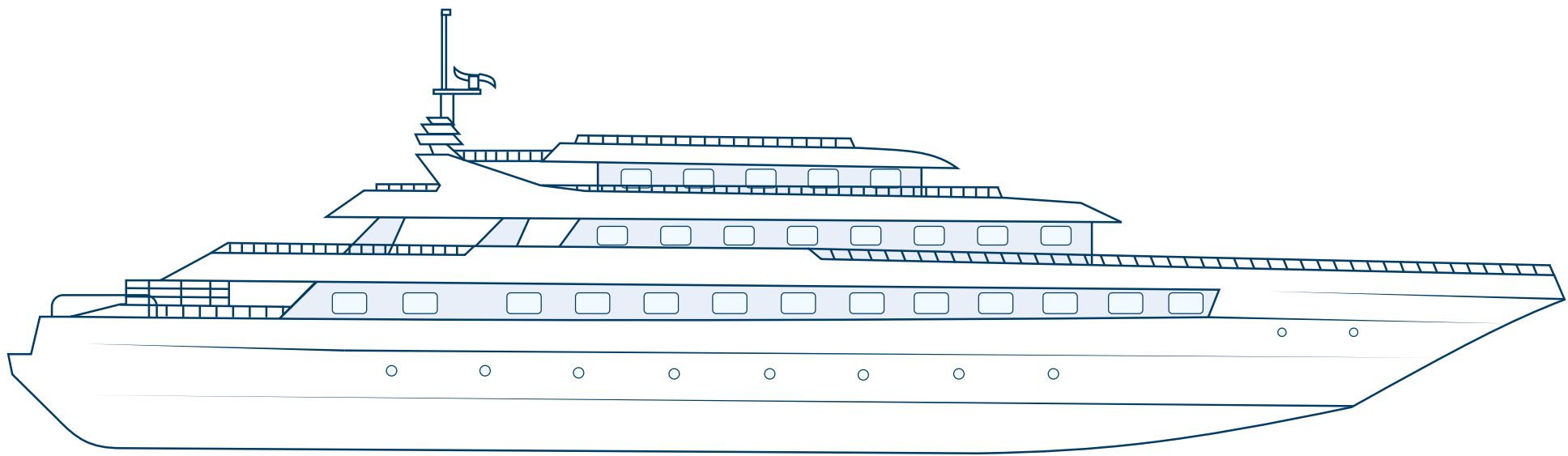
- Divesite
- Local island
- Snorkeling
- Sandbank
- Restaurant
- Resort visit



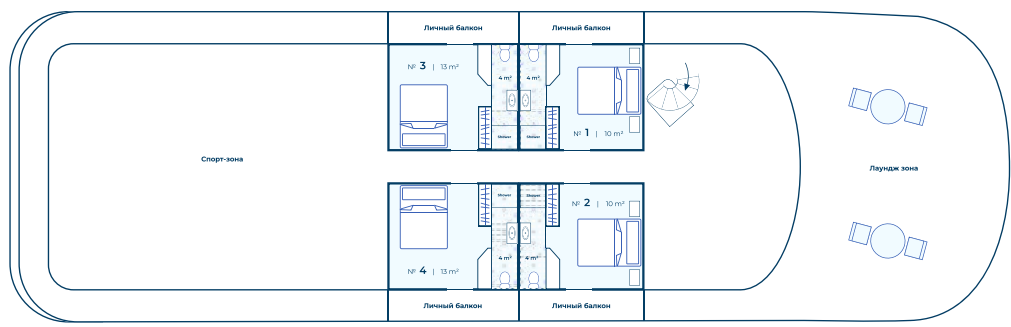




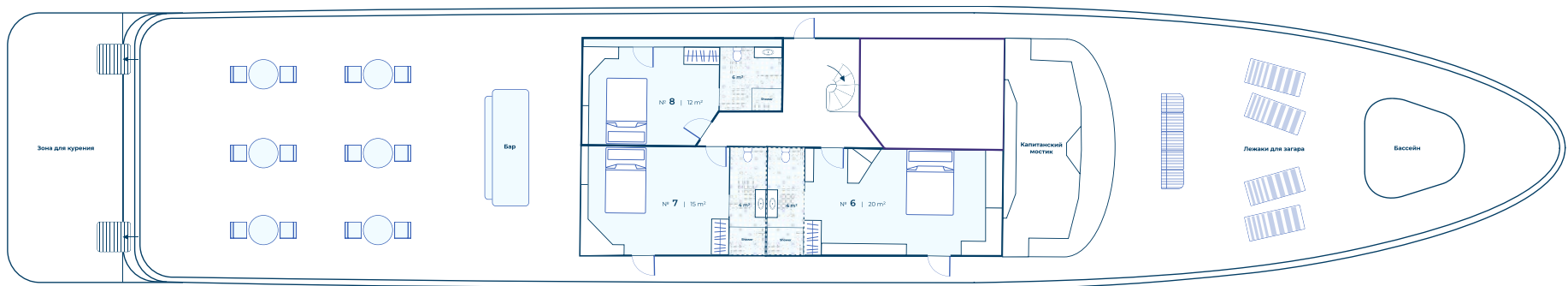
Yacht specs



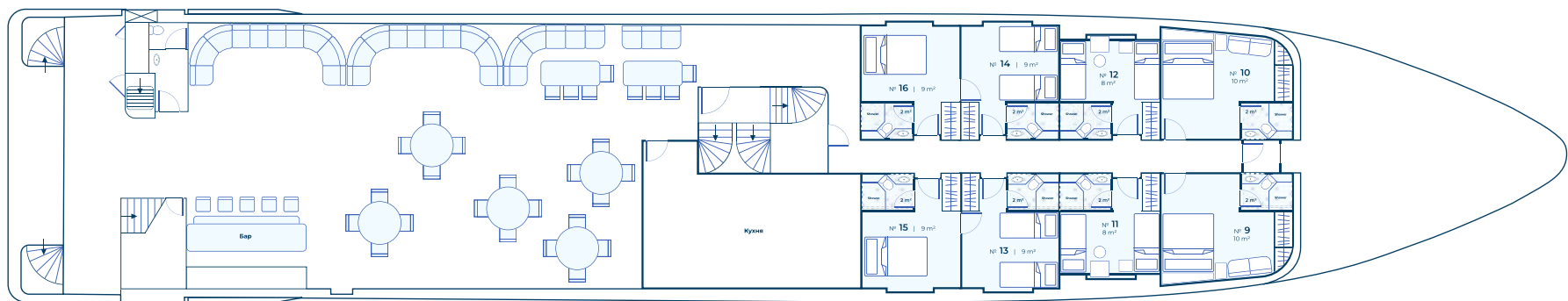
Profile



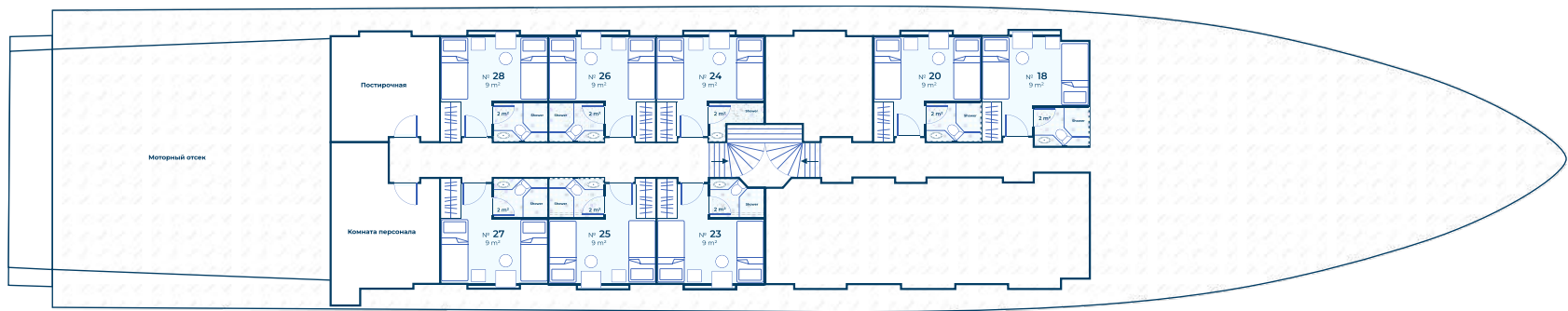
Top deck



Upper deck



Main deck



Lower deck

TYPE
Twin Screw Diesel Yacht

START OPERATION IN MALDIVES
2017

LATEST RE-DESIGN
2025

SPEED
Max 12 knots
Cruising 8 knots

FUEL CAPACITY
30 tonn

WATER CAPACITY
30 tonn

DIMENSIONS
Lenght Overall 58 m
Beam 9.2 m

INTERIOR
4 decks
1 restaurant 2 bars
1 mini pool
Yoga deck and mats

TOYBOX
Karaoke
2 × SUP boards
2 × Kayak

DIVING
2 × Diving compressor Coltri,
265L/min
1 × Dhoni
1 × Dingi

ENGINES
2 × Caterpillar engines *1000hp
2 × Caterpillar generator, 125kW
1 × Caterpillar generator, 50kW
1 × Onan generator, 22.5kW

COMMUNICATIONS
2 × Fruno radars
Starlink satellite internet
Cellular GSM system
AIS, EPIRB, Sart



Price

Room category	Deluxe ocean view (Top deck)	Junior suite ocean view (Upper deck)	Deluxe Queen/Twin (Main deck)	Standart twin room (Lower deck)
Quantity	4	3	8	8
Room size	10-13 m ²	12-20 m ²	9-10 m ²	9 m ²
Occupancy	2 adults	2 adults + 1 child	3 adults	2 adults
Room features	Private balcony Panoramic windows	Panoramic windows	Can connect to the neighboring room	Compact and comfortable
Price per room per 1 night	230\$ SGL 330\$ DBL	230\$ SGL 330\$ DBL	200\$ SGL 300\$ DBL	150\$ SGL 250\$ DBL



Included in your stay:

- Accommodation in the selected cabin category
- Full Board meals (breakfast, lunch, dinner)
- Snacks
- Non-alcoholic drinks (water, tea, coffee)
- Onboard Wi-Fi (Starlink)
- One daily beach visit (sandbank or bikini beach on a local island)
- GST 17%, service charge 10%, and Green Tax \$12 per person per night



Top deck

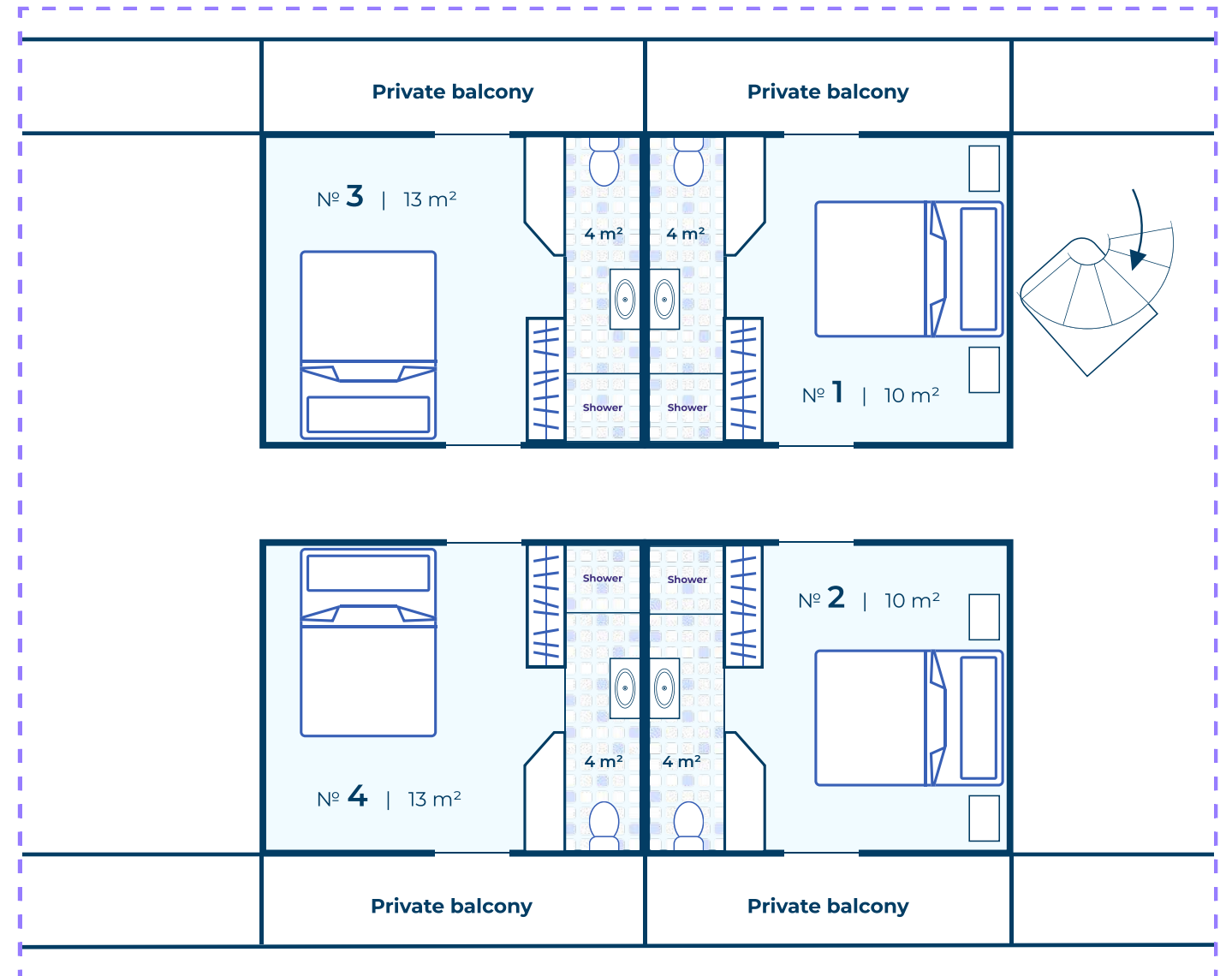
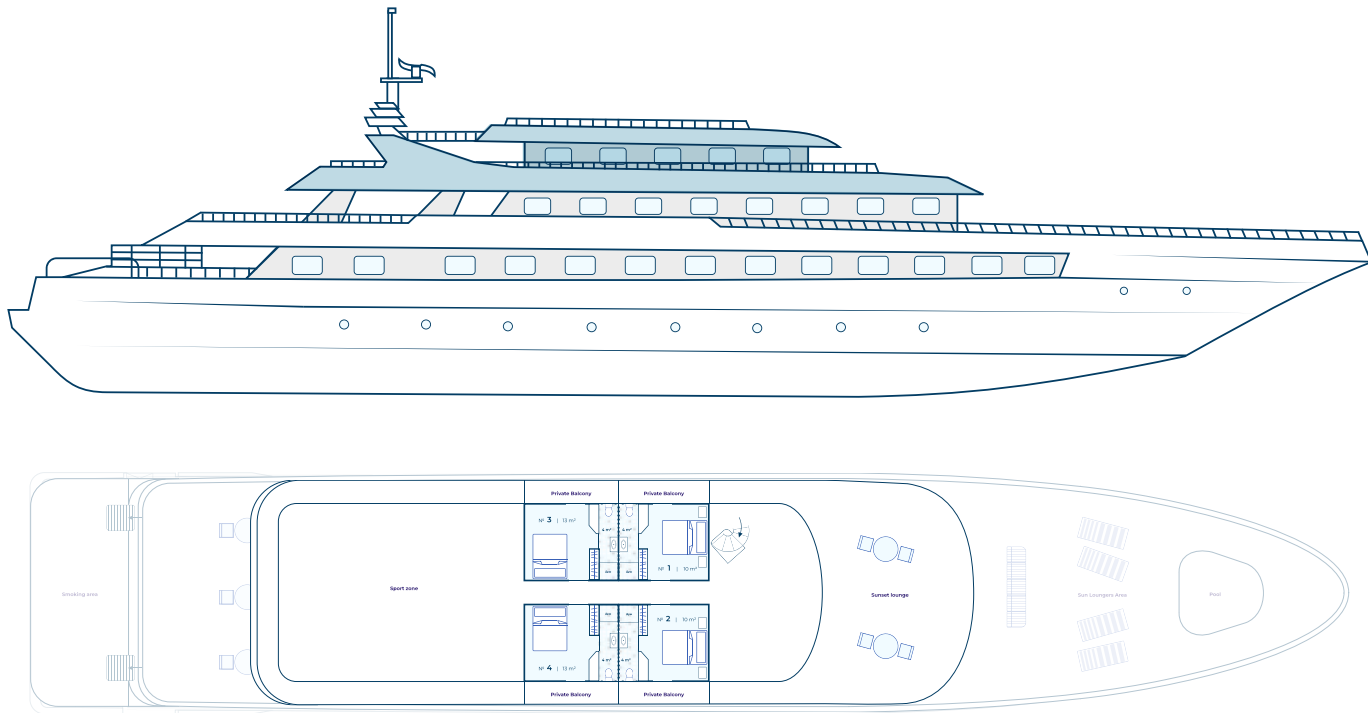
Deluxe ocean view

Quantity: 4

Room numbers: 1-4.

Size: 10-13 m²

4 comfortable Deluxe Ocean View cabins with a private balcony offering panoramic ocean views.



Nº 1 and Nº 2 Deluxe ocean view, 10 m²

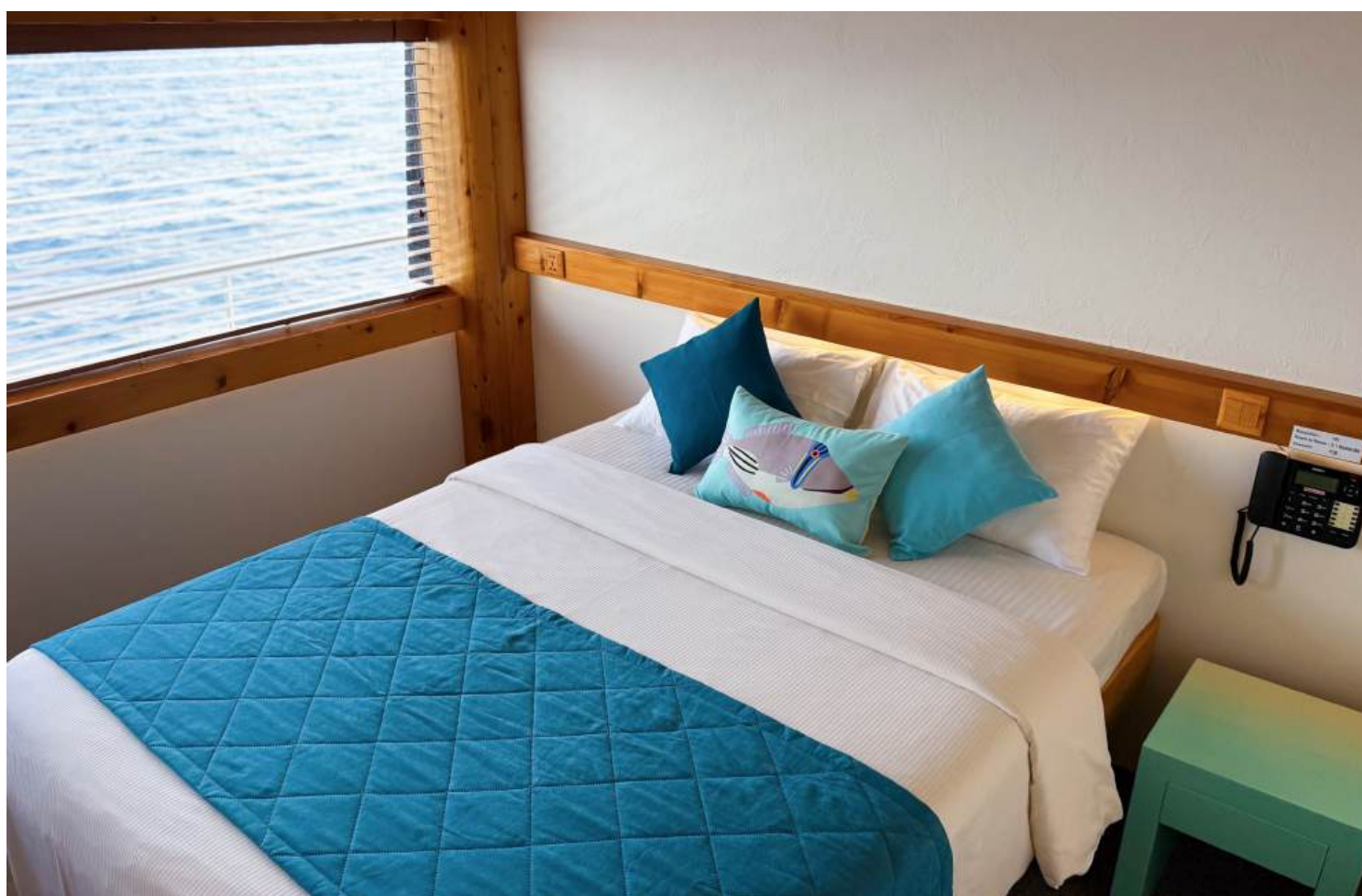
Nº 3 and Nº 4 Deluxe ocean view, 13 m²

Each room with a private balcony features a queen-size bed.

Max guests: 2 Max adults: 2 Max children: 1 Max infants: 1

In every cabin:

- Private balcony
- Panoramic ocean-view window
- Spacious shower with hot water
- Shampoo, conditioner, shower gel
- Bath and beach towels
- Refrigerator
- Safe
- Internet-enabled TV
- Hairdryer
- Telephone for contacting reception and other cabins
- Power outlets with USB ports for charging devices
- Wardrobe





Upper deck

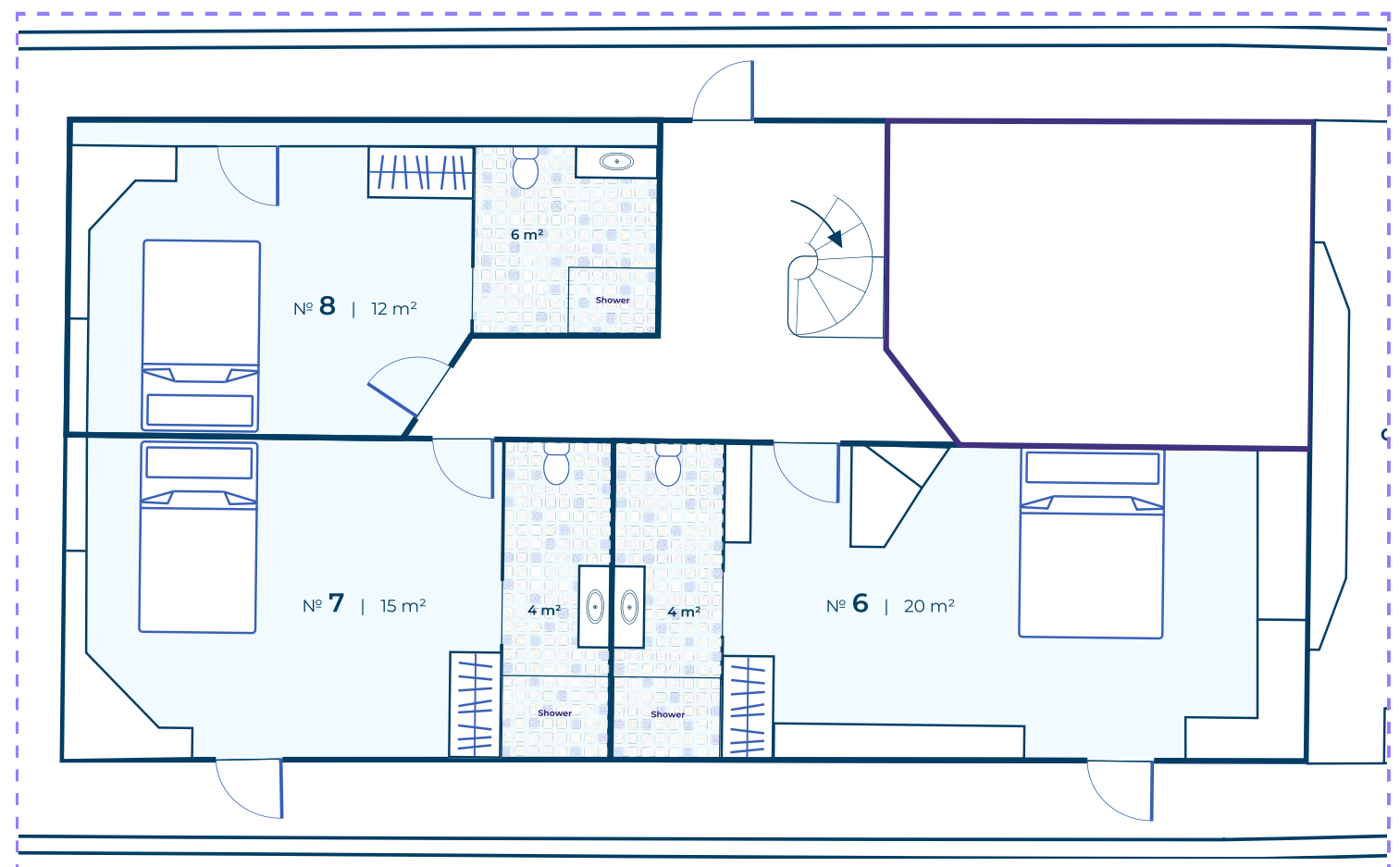
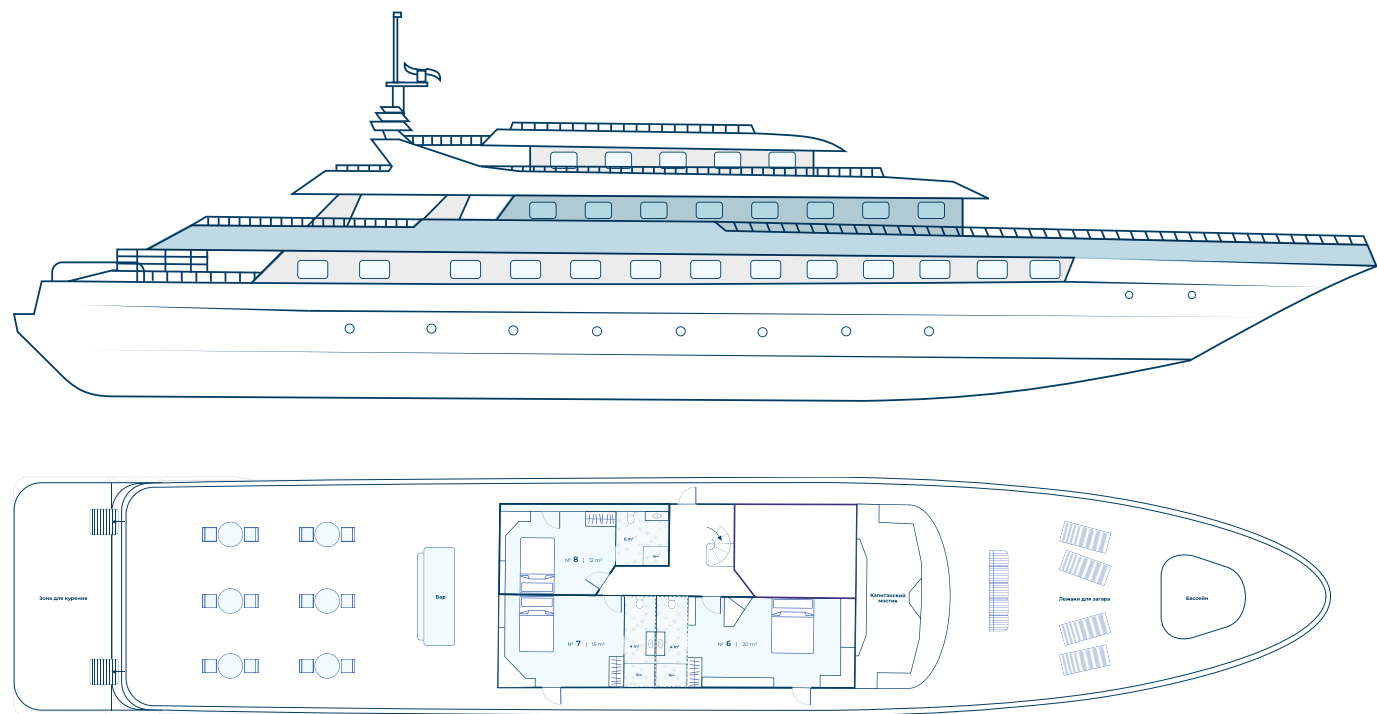
Junior Suite Ocean view

Quantity: 3

Room numbers: 6-8

Room size: 12-20 m²

The most spacious cabins on the yacht, with direct access to the upper deck.
Each cabin includes an extra sleeping space suitable for a child.



Nº 6 Master suite / Honeymoon suite, 20 m²

Nº 7 Junior Suite Ocean view, 15 m²

One queen-size bed. A 180×80 cm sofa suitable for accommodating children up to 16 years old.

Max guests: 3 Max adults: 3 Max children: 1 Max infants: 1

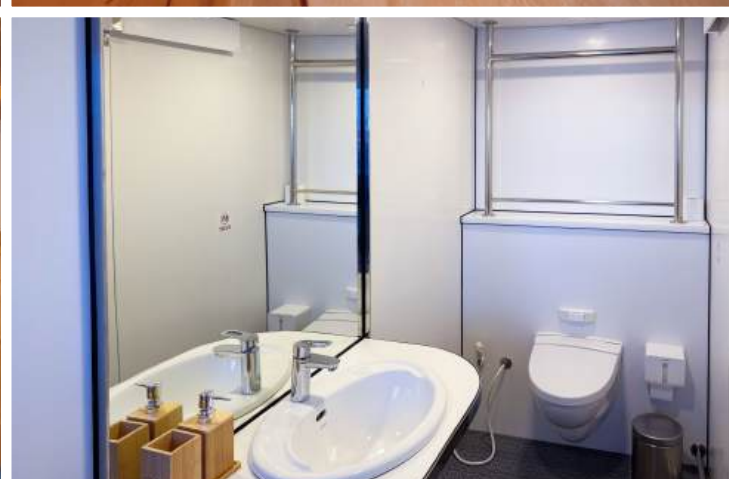
Nº 8 Junior Suite Ocean view, 12 m²

One queen-size bed. A sofa suitable for accommodating children up to 7 years old.

Max guests: 3 Max adults: 2 Max children: 1 Max infants: 1

In every cabin:

- Ocean-view window
- Access to the upper deck
- Spacious shower with hot water
- Shampoo, conditioner, shower gel
- Bath and beach towels
- Refrigerator
- Safe
- Internet-enabled TV
- Hairdryer
- Telephone for contacting reception and other cabins
- Power outlets with USB ports for charging devices
- Wardrobe





Main deck

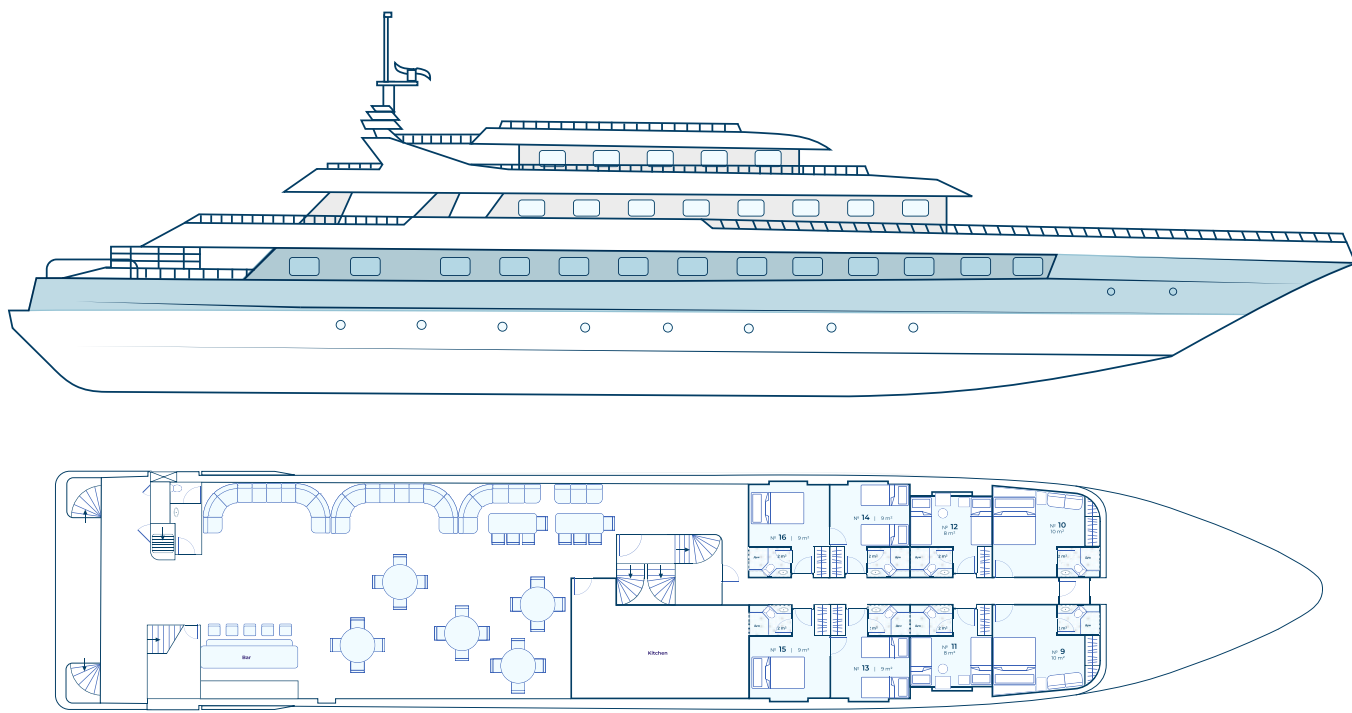
Deluxe Double

Quantity: 8

Room numbers: 9-16.

Size: 9-10 m²

Deluxe cabins are located on the yacht's main deck, on the same level as the main restaurant.



Nº 9 and Nº10 Deluxe Double Queen, 10 m²

One queen-size bed. A sofa suitable for accommodating children up to 7 years old.

Max guests: 3 Max adults: 2 Max children: 1 Max infants: 1

Nº 11 - 14 Deluxe Twin 2 Bed, 9 m²

Two single beds — perfect for friends or children. Cabins No. 13 and 14 are connected to the Deluxe Queen Bed cabins through an internal door.

Max guests: 2 Max adults: 2

Nº 15 and Nº16 Deluxe queen bed (connected), 9 m²

Queen-size bed. Can be connected to the Deluxe Twin cabins through an internal door, making it ideal for families with children.

Max guests: 2 Max adults: 2

In every cabin:

- Ocean-view window
- Spacious shower with hot water
- Shampoo, conditioner, shower gel
- Bath and beach towels
- Refrigerator
- Safe
- Internet-enabled TV
- Hairdryer
- Telephone for contacting reception and other cabins
- Power outlets with USB ports for charging devices
- Wardrobe





Lower deck

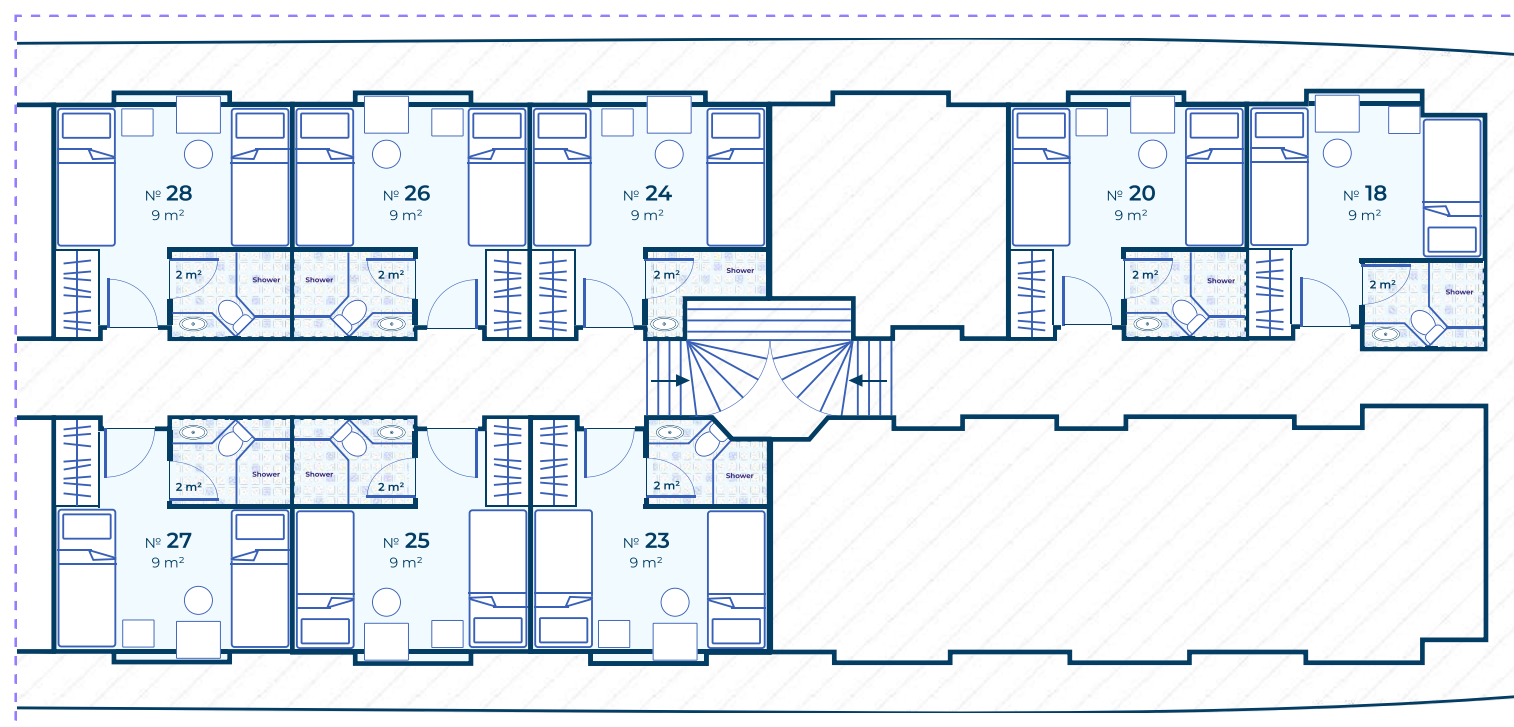
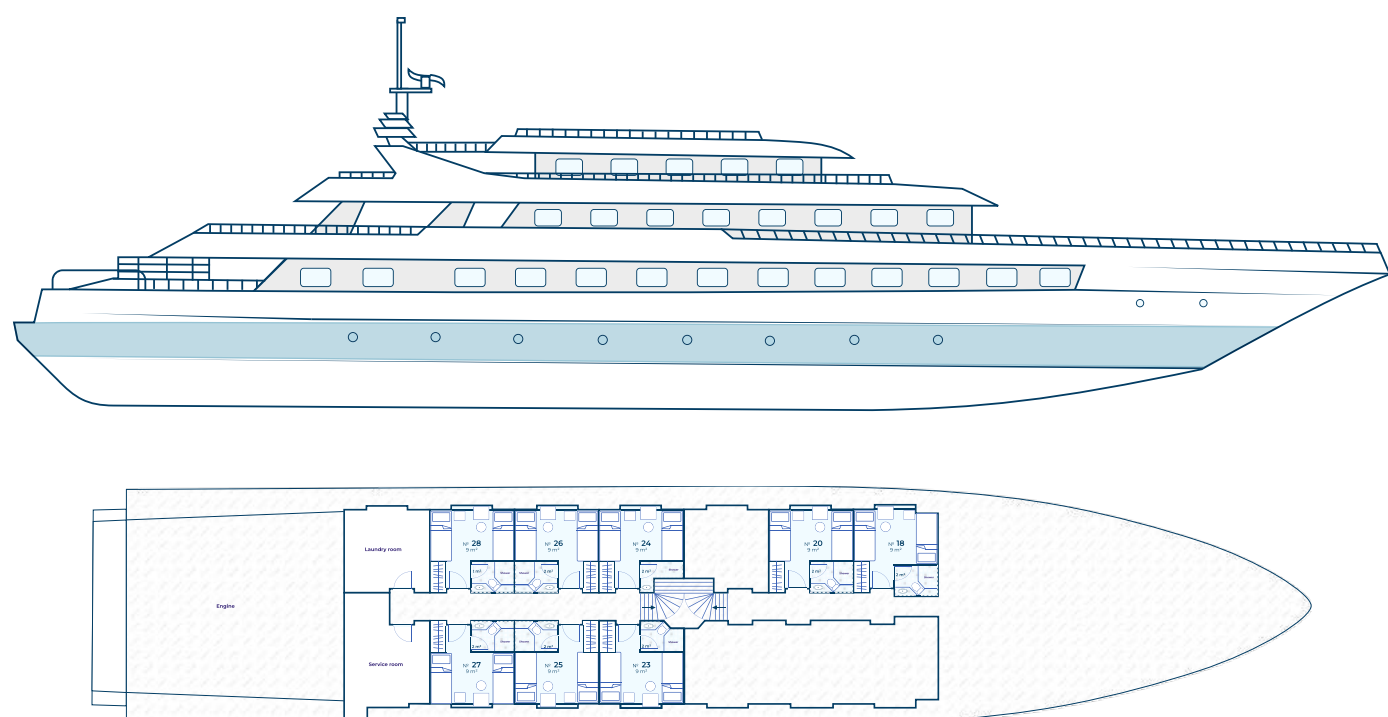
Standard Twin

Quantity: 8

Room numbers: 18, 20, 23-28

Size: 9 m²

Compact yet comfortable cabins for active travelers



Nº 18, 20, 23-28 Standart twin, 9 m²

Standard cabins with two separate single beds

Max guests: 2

Max adults: 2

In every cabin:

- Porthole
- Spacious shower with hot water
- Shampoo, conditioner, shower gel
- Bath and beach towels
- Refrigerator
- Safe
- Internet-enabled TV
- Hairdryer
- Telephone for contacting reception and other cabins
- Power outlets with USB ports for charging devices
- Wardrobe





RITRELLA

RITRELLA.COM